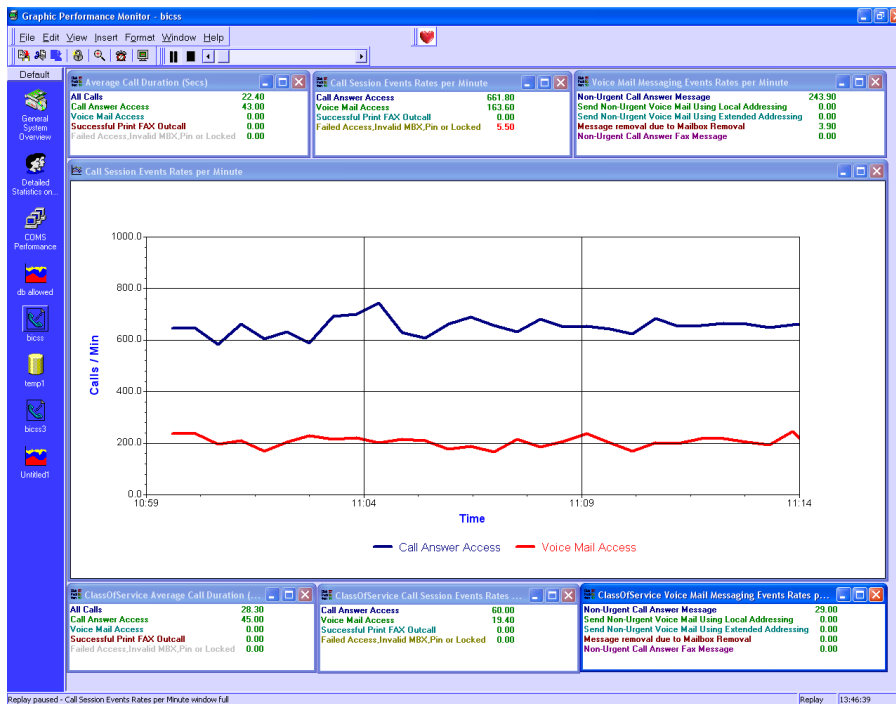


## Graphic Performance Monitor™



**GPM/BICSS**

### BICSS Monitoring and Reporting made easy!

You may already be aware of GPM and of the GPM NAP module which allows you to measure and monitor all aspects of NAP performance.

Now there is a new optional add-on module for tracking BICSS activity.

The GPM BICSS Module is a GPM module that reads the Events records in the BICSS Activity File and gives you vital information that you can use for Reporting, Monitoring or Alarming purposes.

The BICSS Activity File is read in near real time, so you always have an up to the minute picture of what is happening on your system.

What's more, GPM processes the huge volume of information in the BICSS Activity File with minimal system overhead and present it to you in an easy to handle and usable format.

### Event Selection at Your Fingertips

The GPM BICSS Module gives you full control over which Events records are monitored. Select standard reports by their report number, and optionally override the standard report description if you wish. If your site uses custom Events records, then you can specify how you want the BICSS module to handle these.

The GPM BICSS Module gives you three basic categories of information for each report number being monitored in the sample period:

- The actual count of number of Events that happened
- The rate per minute at which the Events occurred
- The average call duration in seconds of those Events

## Categorisation

Information is provided at the Total level for all Events records that are processed. You can also categorise the information by Class of Service and Platform as well.

Once the data is stored in GPM, then you can monitor it, alarm on it and report on it using the standard GPM toolset.

## Track historical trends

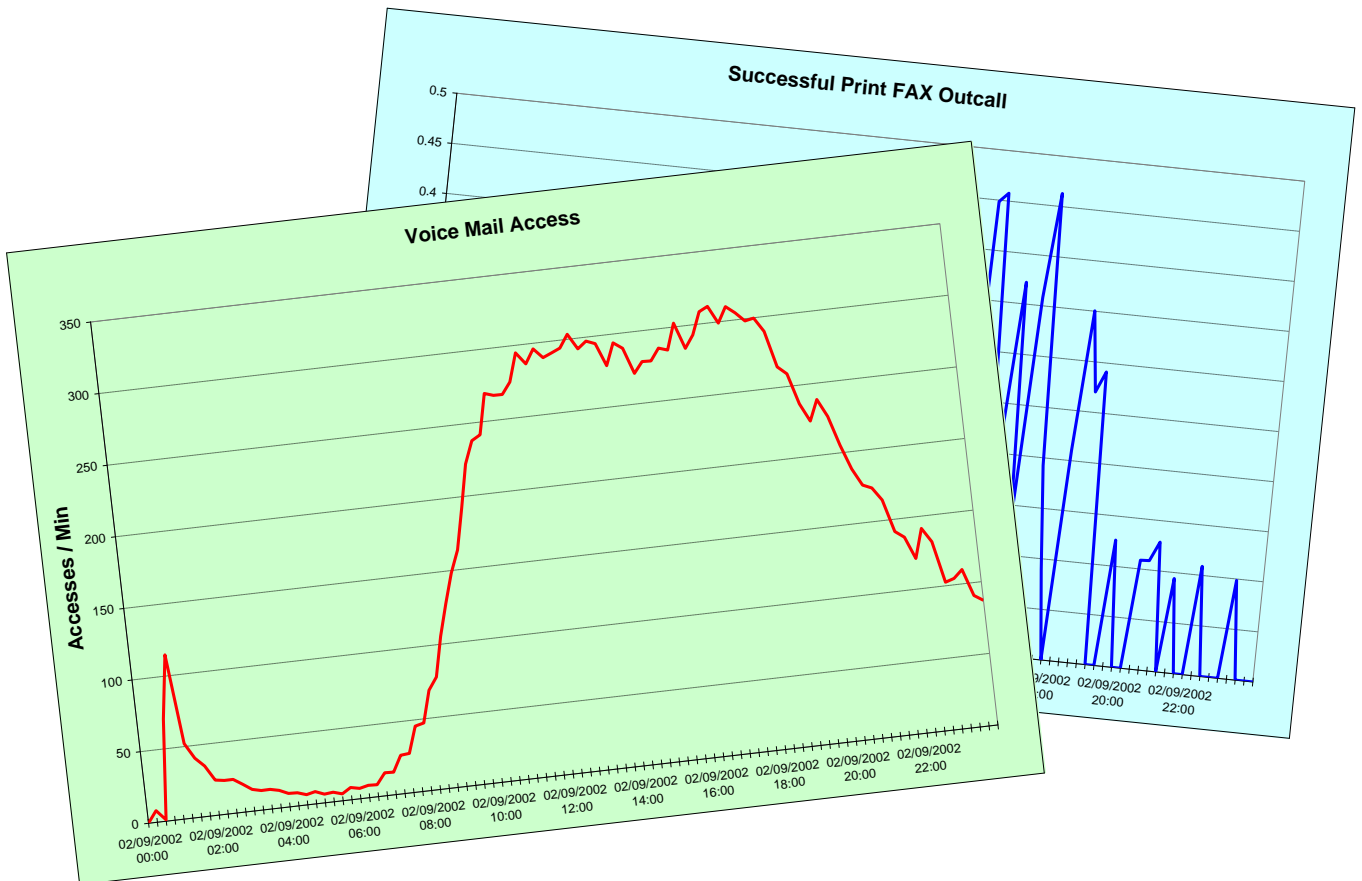
The GPM data aggregation facility allows system usage information to be summarised into longer term history files which are ideal for trend analysis and statistical reporting. GPM history files can be displayed and replayed just like normal data files or they can be used for Reporting.

## Management Reporting

You can get both automated and ad hoc BICSS performance reports and graphs using GPM/Query. It's architecture allows you to analyse your performance data directly from Microsoft's Excel, combining our expertise with the power of Excel.

You can also extract the Host GPM data to the PC, allowing you access to a whole range of standard desktop analysis tools.

The example graphs below show just 2 of the many areas of system activity over a period of 24 hours.



***"Why not take advantage of a free evaluation?"***

---

**Affinité Europe - Specialised Software Solutions**  
**Tel: +44(0)7974 233849**  
**Web: [www.affinite.co.uk](http://www.affinite.co.uk) – Email: [office@affinite.co.uk](mailto:office@affinite.co.uk)**

---