

PC-DIR

Feature Sheet

The UNISYS MCP/AS offers many disk management and interrogative facilities to ODT, MARC or CANDE users. Some of these facilities are powerful but can be complex or difficult to use.

PC-DIR (PC Directory Information Retrieval) addresses these limitations by allowing the user to build a file profile, which may incorporate the filename (or one or more 'fragments' of the name), creation date, lastaccess date, size (in segments) and filekind. DIR interrogates the disk directory structure and extracts those files that match the file profile. The information is returned in a clearly readable, paged format to the remote station and specific file information is readily available at the expense of a few keystrokes. The contents of a selected file may also be examined in detail. Optionally, the output may be routed to a backup printer or disk data file.

PC-DIR offers other significant advantages over the conventional methods of extracting similar information. DIR can provide specific file information faster than most mechanisms currently available in standard software.

Key Features

- Directory searches across multiple pack families
- Four levels of data extraction
- Removal of individual files
- Job creation for removal or copy of identified files

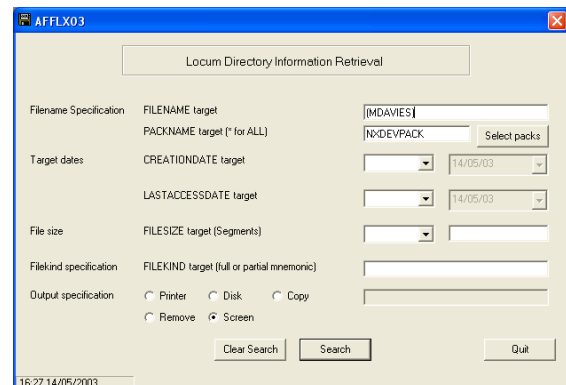
Directory Searches Across Multiple Pack Families

PC-DIR may interrogate a specific pack family, a selection of pack families or ALL available pack families. PC-DIR caters for a maximum of 360 different pack families.

Four Levels of Data Extraction

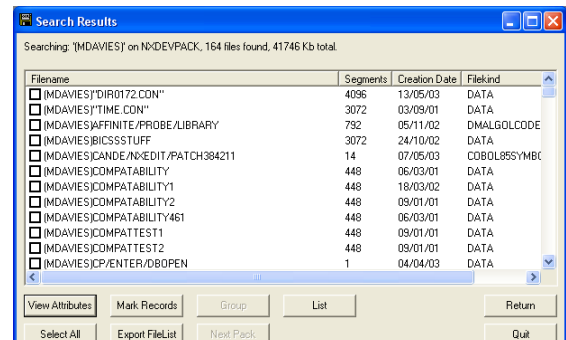
Level 1 - File Identification

The first level returns a list of all files that match the input parameters specified by a user.



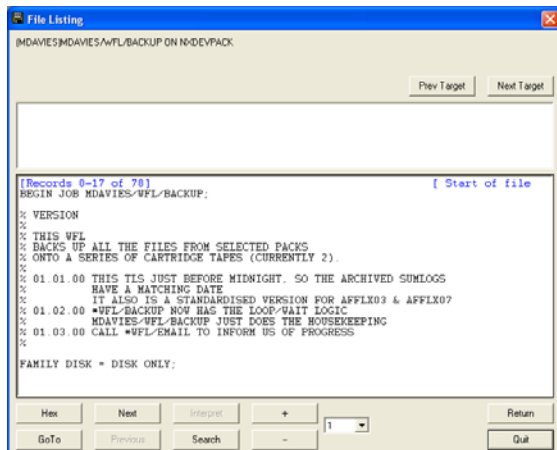
Level 2 - File Attributes

From the list of files returned, a file may be selected and its attributes displayed.



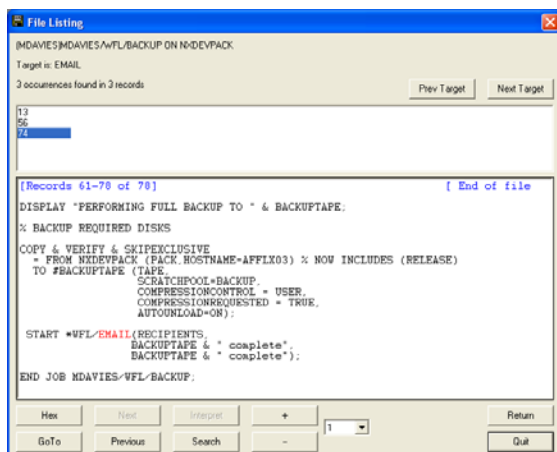
Level 3 - File Contents

After displaying a file's attributes, the contents of the file may be listed.



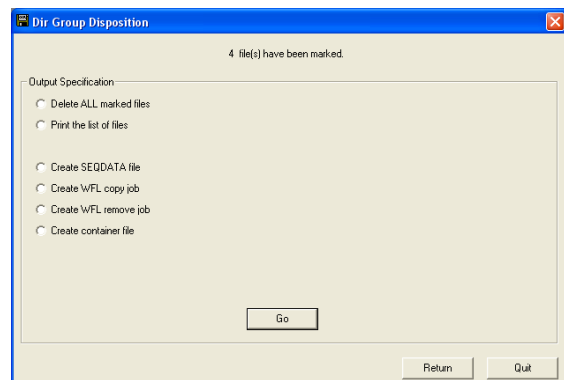
Level 4 - Target String

After listing the contents of a file, a search for a particular target string within the file may be performed.



Actions on Grouped Files

- Delete all marked files
- Print the list of marked files
- Create a file containing the names of the marked files
- Create a WFL deck to copy all the marked files
- Create a WFL deck to delete all the marked files
- WRAP all the marked files into a container file



From the list of files returned, one or more files may be selected and removed from the pack family.

Job Creation for Removal or Copy of Identified Files

The WFL REMOVE or COPY job is created with a user supplied filename, and can also be run immediately if required.

PC-DIR Summary of Benefits

- Allows MCP/AS file management with an easy to use, point & click, windows standard interface
- Fast searching and response
- Easy searching of multiple Families of Packs
- Saves both time, and money

Free Trial Version

A free evaluation version of PC-DIR is available. Contact Affinité Europe for more information.

For More information contact Affinité Europe:

Tel - +44(0)1943 864124
Fax - +44(0)1943 864917

Email – office@affinite.co.uk
Web – www.affinite.co.uk