

## An all-purpose tool for EAE (LINC/LDAIII) developers

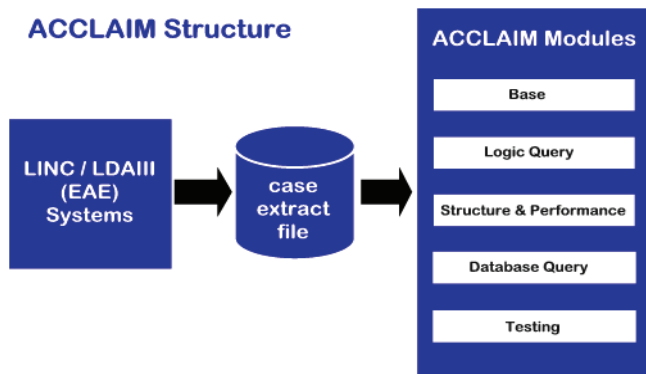
### Presenting an Efficient and Powerful Tool for EAE (LINC/LDAIII) Development!

ACCLAIM is an investigation and re-engineering tool written in LDAIII which provides maximum information about LINC specifications with minimal user input. ACCLAIM is designed to increase productivity of EAE (LINC/LDAIII) developers when performing major or minor changes to their systems.

ACCLAIM can handle all sizes of LINC systems on all platforms and even with a very large system can still provide sub-second responses to queries.

ACCLAIM is modular in design, currently consisting of Base, Logic Query, Structure and Performance & Database Query, with a Testing module under development.

With ACCLAIM, you can choose the modules most appropriate for your projects!



### Easy to Use

ACCLAIM presents your LINC specifications on your PC clearly and simply using the power of Windows and LDAIII. Much of the work can be done off-line to avoid any additional overhead on your host machine.

### Queries and Drill Down

Where Used and Where Updated Queries can be performed on Items of type GSD, Screen, Report, Global Logic and Local SDs. Where Used enquiries can be made on Profiles, Ordinates, Global Logics and Frames.

When reviewing a section of logic, "Insert" Print Frame and Begin Page statements can be drilled down by up to 5 levels.

### Quality

Don't worry if your system is not as well maintained as you would wish! The techniques and methods used by ACCLAIM will take and analyse "less than perfect" systems and will provide information that can quickly raise the quality of the specification with minimum effort and maximum benefit. So you get the added bonus of improved quality.

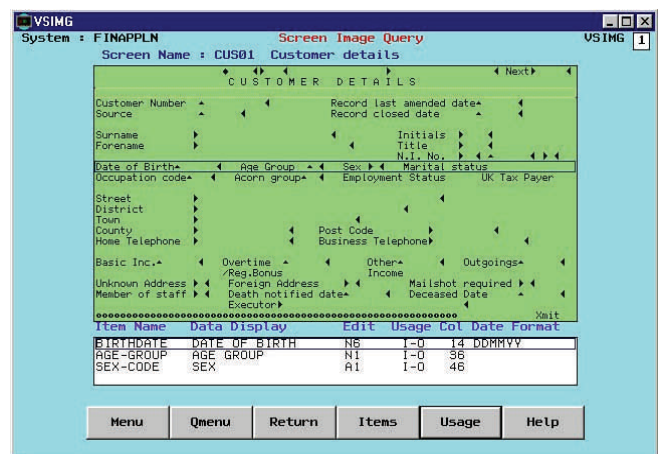
### Familiarisation

You can learn about the structure of part or all of a LINC system quickly and easily. The main areas that will benefit you are:

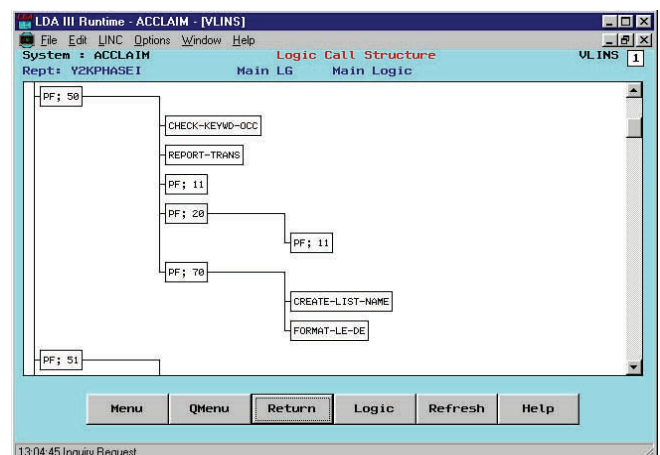
- **Overall system** – you can browse through screens, reports, global logics etc. to get an overview.

**Reports** – you can see the various frames, how they are called and used diagrammatically, and what files are accessed. You are able to see a painted image, how many lines of logic per frame and in total and how many SDs.

**Screens** – You can see what other screens it calls, what Global Logics it calls and what files are accessed. You can also get a screen image.



- **Logic Structure** – You can see the main process loops



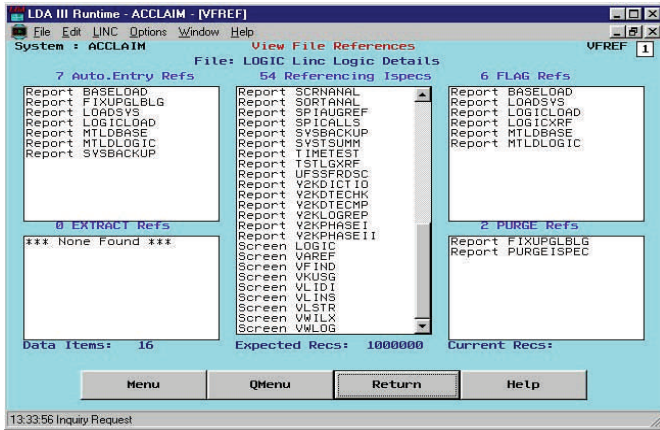
### Reporting Facilities

ACCLAIM provides a number of very useful reports to supplement its interactive screen displays. These reports and their parameters are all initiated and entered within the

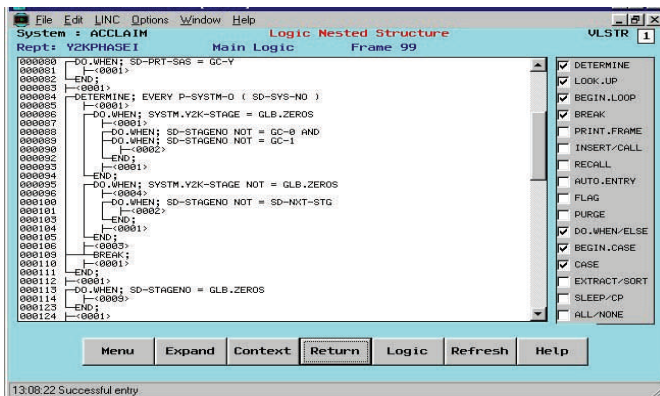
## Structure and Performance Module

This new module enables EAE(LINC/LDAIII) developers to quickly gain an understanding of complex reports and screens. It also provides information so that code structure and database accesses can easily be reviewed and improved where appropriate. For example, which files are referenced or updated, what loops exist and what calls are made to Global Logics and Frames.

The screen below shows where and how a file in the database is accessed within the system.



Below is an example screen illustrating the loops, reads and the call structure of a large, complex report.



These powerful capabilities will greatly improve productivity, especially when carrying out maintenance or when areas for potential performance improvement are being investigated.

## General Housekeeping

The Base and Logic Query modules enable efficient general housekeeping of the LINC specification. For example, ACCLAIM offers effective facilities for tidying up and enforcing your data dictionary.

ACCLAIM helps to remove embedded A Series highlight characters, to turn inserted Global Logics into Performables and to show which Print Frames can be replaced with Perform.Frame.Logic.

It is possible to see Screen and Report Images and identify data names and attributes within that image.

## Lists

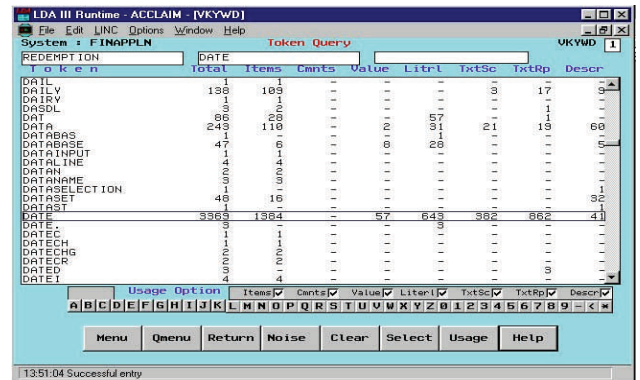
You can build a list of items of a similar type/category and then perform functions (e.g. queries) on items in the list. This feature was extensively used in the Year 2000 module for data items with different date formats.

It can be used to group together all items used in a particular part of a system, e.g. arrears processing and month end reports.

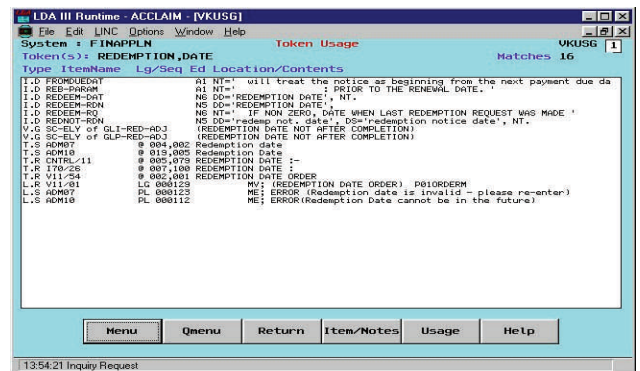
## Text Searching

You can use this feature to search for a certain string of text, e.g. patch numbers and comments.

- You can search with up to 3 text literals (tokens) (logical ANDs)
- There are 7 different types of token e.g. Data Item names and descriptions, Screen text etc.



The resulting matches are presented to the user so that they can be further investigated in situ as shown below.



## Database Query Module

This module provides fully integrated access to your run-time database to simplify and speed up testing.

## Evaluation

A free evaluation and demonstration of your own EAE (LINC/LDAIII) system is available. Call us for information.