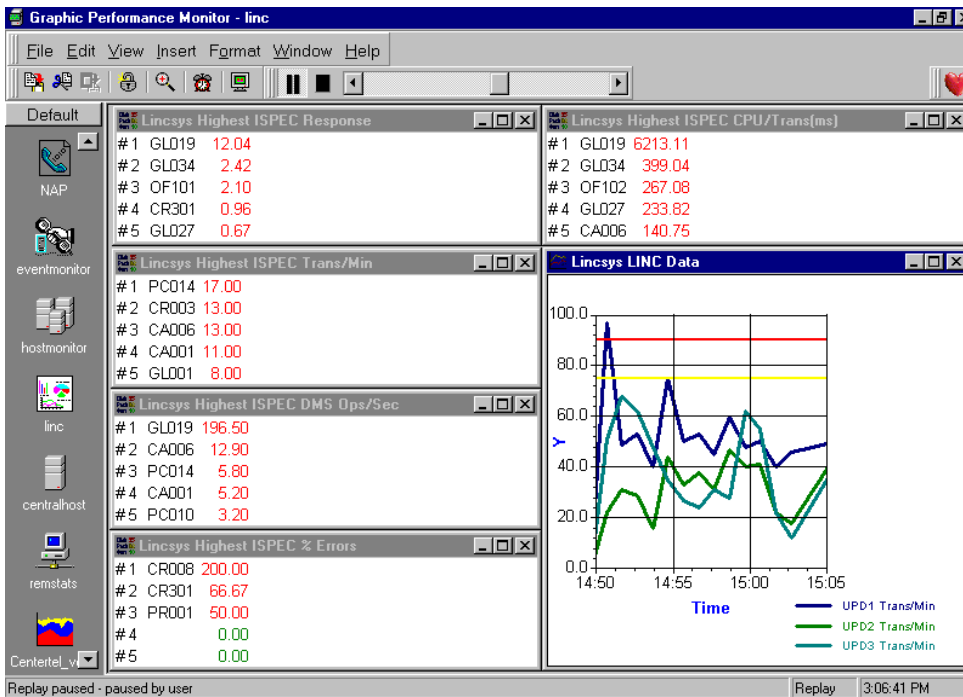


Graphic Performance Monitor TM



GPM/LINC

The fastest, most affordable way to monitor real-time LINC performance

The truth is, while LINC allows you to create systems quickly to meet your user's needs, you can't take advantage of what these systems have to offer unless they perform well. With the GPM/LINC Analysis Module you'll have the fastest, easiest way to monitor, understand and optimize your LINC systems' performance.

At a glance you'll see what levels of service your LINC systems are providing, and you will be able to quickly take whatever actions are necessary to minimize response times.

Running as part of the Graphic Performance Monitor (GPM), this LINC analysis module makes it possible for you to monitor your LINC systems in real-time, at the ISPEC and subsystem levels.

See inside your LINC system

Like having a real-time X-ray of your LINC system, you can see which ISPECs have the poorest response times, which ones are using the most CPU, and which ones are

doing the most DMSII reads and writes. You can also see the distribution of response times by subsystem, and a measure of the variation of response times by subsystem. And you'll see it all in an easy-to-understand graphics format, designed for all IBM or compatible PCs.

And it's a lot more than just a LINC Monitor

LINC performance depends on many factors. With GPM and the GPM/LINC Analysis Module you can see how every factor affects your Linc systems. Monitor the LINC database and immediately see how changes in DMSII parameters affect LINC response times. You can also track CPU activity, disk pack utilization, and memory statistics.

It makes complex information easier to gather and evaluate

With GPM you'll quickly spot operational problems and then you can focus-in on their causes. Different sets of monitor data can be assigned to function keys. Normally you

might only display very high-level data on LINC transaction rates and response times. But when a problem occurs, you will be able to instantly view detailed information on other aspects of the system by pressing a single key.

GPM/PC is designed to allow you to customise the software and install additional data collection modules to monitor site specific information.

Displays system, workload, transaction and database performance information in real-time, in an easy-to-understand graphic format for IBM or compatible PCs.

GPM software has two elements; one runs on the host system, the other runs on the PC.

GPM/PC is used by system operators, technical support personnel, database administrators and data processing staff responsible for correcting system performance problems and for enhancing system efficiency and cost effectiveness.

GPM/PC allows the system operator to view one set of performance data which gives a general overview of the system, while the database administrator is simultaneously viewing detailed DMSII information.

Optional Add-On Modules to GPM/PC:

1. Workload Analysis Module

Uses a subset of the popular CP/Analyzer capacity management software to monitor the utilization of

system resources broken down by user defined workload classifications. Individual tasks or workload that are consuming excessive amounts of system CPU, I/O and memory resources can be quickly identified. In addition, this module calculates the components of transaction response time and program elapsed time to help identify bottlenecks degrading performance.

2. COMS Analysis Module

Monitors transaction activity and response for COMS processing programs. With this information, the user can quickly determine transaction processing programs which have poor response time or are experiencing significant queuing problems.

3. LINC Analysis Module

Provides real-time feedback on performance and through-put of one or more LINC systems, at the subsystem and ISPEC level. Displays performance statistics in an easy-to-understand graphic format. Allows you to optimize ISPEC response time and overall LINC system performance.